

WBB



# WOBBLER KIT

Model: WBB  
*Operating Manual*



---

**WARNING: TO AVOID SERIOUS INJURY, PLEASE READ  
AND FOLLOW ALL INSTRUCTIONS PRIOR TO USE**

**\*\*WOBBLER KIT WILL FIT EPIC SHOT OUTDOOR AUTO TRAPS EXCEPT THE FF550 FIREFLY\*\***

## WBB



# WARNING



**Once trap is mounted on top of wobbler, please adhere to the following warnings:**

THIS DEVICE CAN BE DANGEROUS AND MUST BE HANDLED WITH EXTREME CARE TO AVOID SERIOUS BODILY HARM

NEVER PLACE ANY BODY PART IN THE WAY OF ANY MECHANICAL PIECE OF THIS TRAP WHILE LOADED

ALWAYS DISARM THE TRAP BEFORE LOADING, ADJUSTMENTS, OR MAINTENANCE

ALWAYS DISCONNECT SPRING WHILE IN STORAGE, WHILE TRANSPORTING, OR NOT IN USE

NEVER STAND TO THE RIGHT OF THE THROWER OR IN THE PATH OF THE THROWING ARM

ALWAYS WEAR PROPER EAR & EYE PROTECTION WHILE OPERATING OR ADJUSTING TRAP

NEVER ALLOW CHILDREN OR UNTRAINED PERSONS TO APPROACH OR USE THE TRAP

ALWAYS INSPECT TRAP TO ENSURE UNIT IS IN GOOD OPERATING CONDITION PRIOR TO EACH USE

EPIC SHOT TRAPS, LLC DBA EPIC SHOT OUTDOORS, LLC DOES NOT ACCEPT ANY RESPONSIBILITY FOR DAMAGES AND/OR INJURY SUSTAINED FROM THE USE OR MISUSE OF THIS PRODUCT

**\*\*SHOOTER SHOULD ALWAYS STAND TO THE LEFT OF OR BEHIND THE TRAP FOR SAFETY REASONS \*\***

### REQUIRED TOOLS

14MM Socket/Wrench

13MM Socket/Wrench

Phillips Screwdriver

Needle Nose Pliers

**12V DEEP CYCLE MARINE BATTERY IS RECOMMENDED FOR OPTIMAL PERFORMANCE. \*\*TOOLS & BATTERY NOT INCLUDED.**

Please follow the instructions and reference the pictures while assembling your Wobbler Kit. Failure to complete proper assembly could result in damage to Wobbler and/or bodily harm.

DO NOT discard the packaging materials until your Wobbler is fully assembled. Small parts and pieces may be loose in the box, care should be taken while opening and sorting through the packaging.

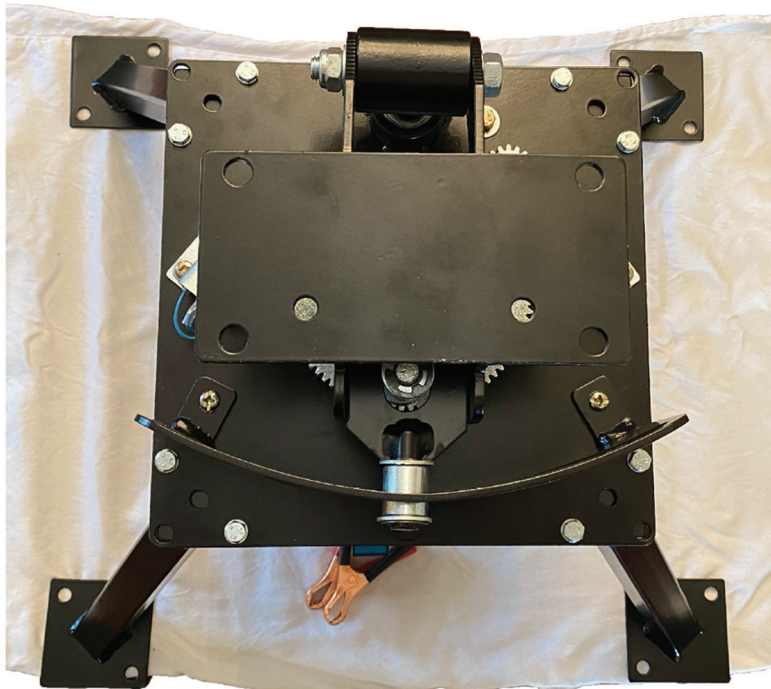
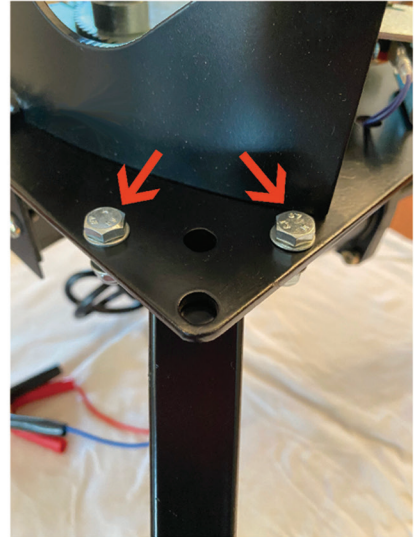
***\*Wobbler shown throughout instructions to provide more detailed images***



## WBB

# ASSEMBLY

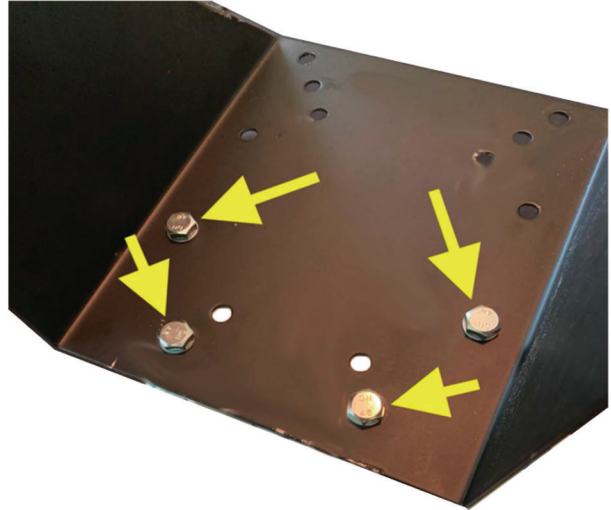
1. Carefully remove wobbler parts from box.
2. Using the 8 - M8x40mm hex bolts, two washers per bolt as shown with arrows on the picture to the right, and 8 - M8 lock nuts, install the wobbler legs as shown and tighten with a 14mm & 13mm socket/wrench.
3. Tighten all 4 legs completely and stand upright.





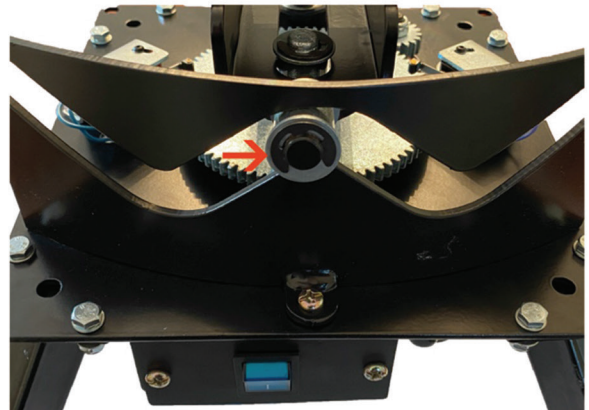
## MOUNTING TRAP BASE

4. Position the trap base on wobbler assembly and align holes for bolts. Note that the back of the trap base should mount to the rear of the wobbler assembly, which is towards the directional plate.
5. Using the 4 - M8x20mm hex bolts, two washers per bolt, and 4 - M8 lock nuts, tighten all bolts and secure the trap base to the wobbler assembly.
6. Continue mounting your trap on top of wobbler assembly as directed in specific trap instructions provided with your trap thrower.



## CHANGING DIRECTIONAL PLATE

1. Using a needle nose pliers, remove directional plate retainer clip and washer.
2. Remove the three phillips screws that hold the plate to the wobbler assembly. Pull the plate out and install the second directional plate the same way the first plate came out.



**NOTE: For easy re-installation, set the middle screw first. Make sure all screws are in prior to tightening completely.**

3. Re-install washer and retainer clip from step one.

